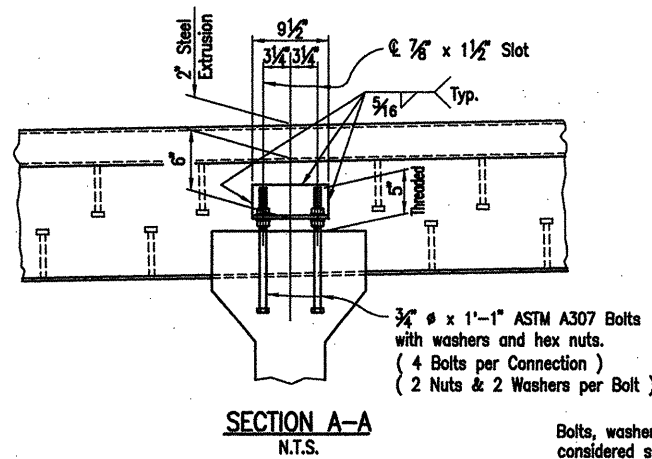


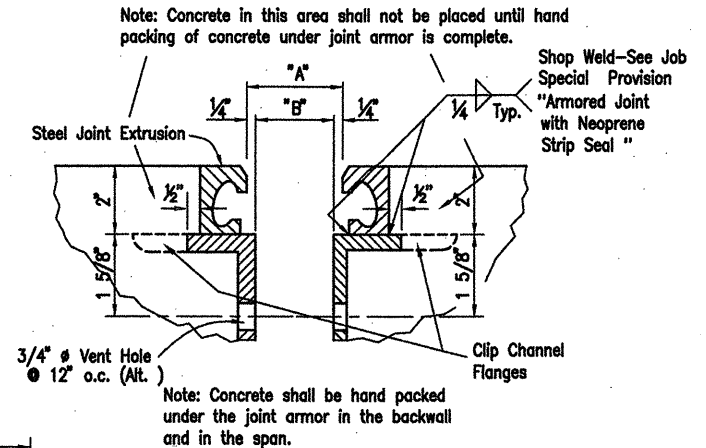
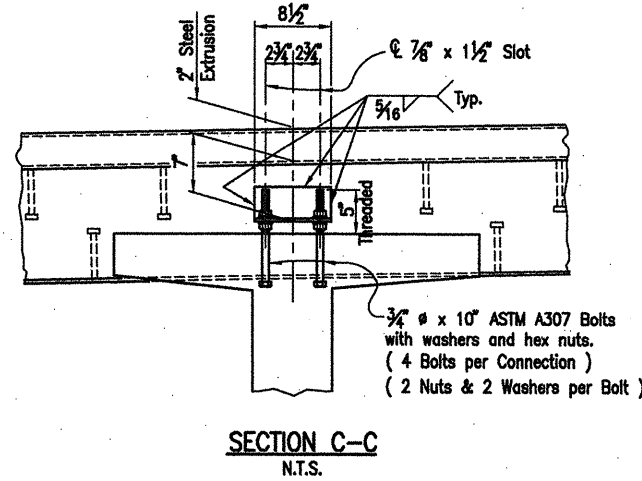
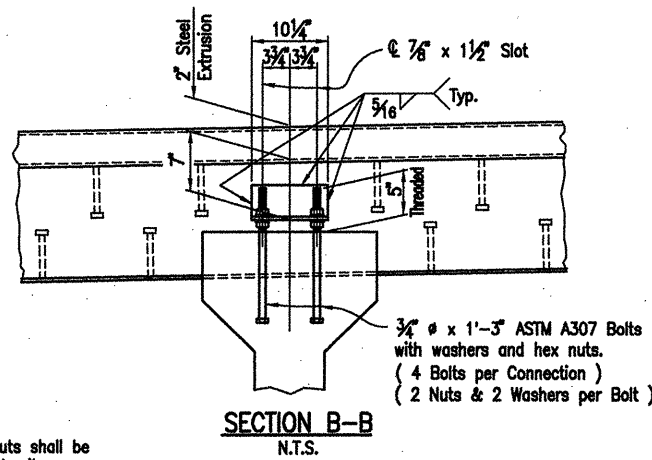
ACAD SCALE: 3/4"=1'-0"

COMPANY\1999 JOBS\99-044 AHTD\WHITERIVER\JOB 110395\expjoint3 Alt1

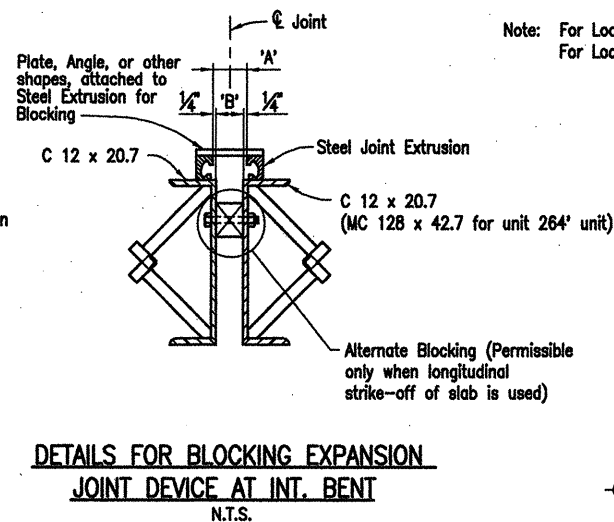
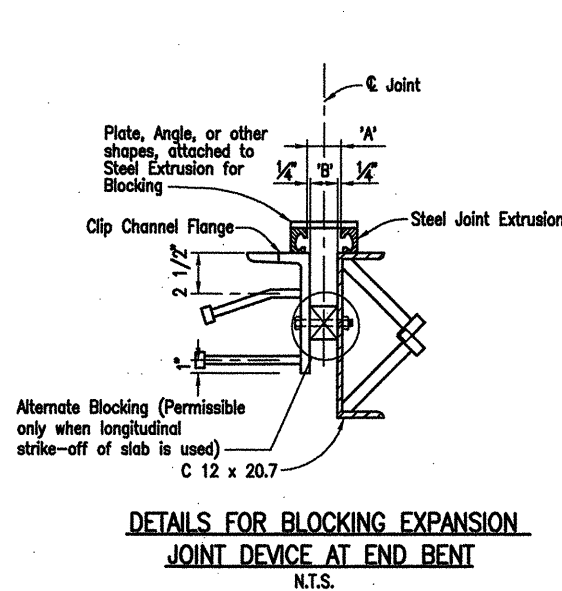
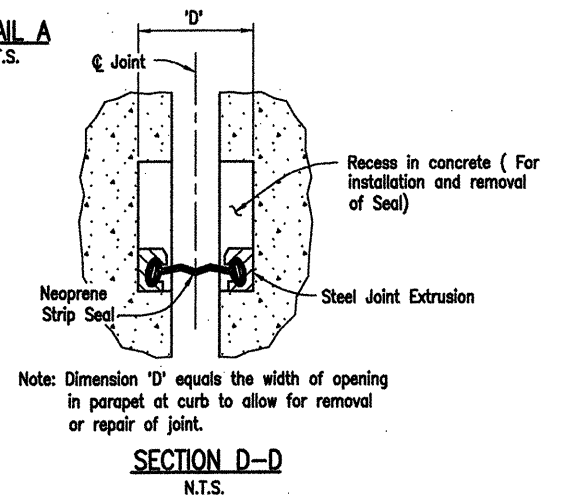
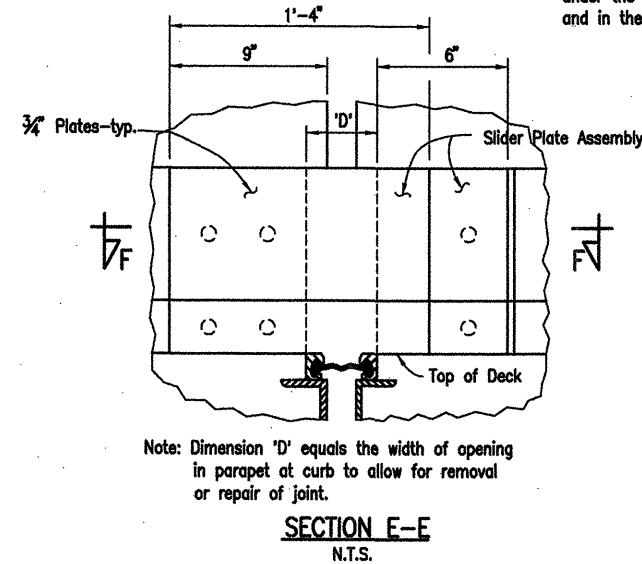
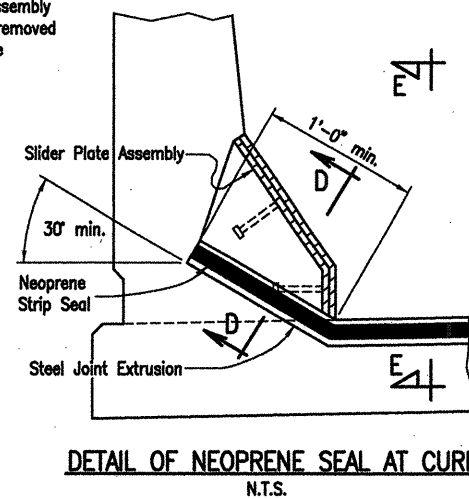
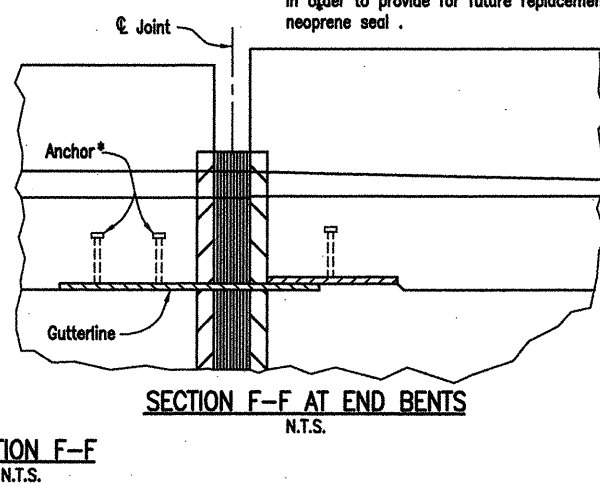
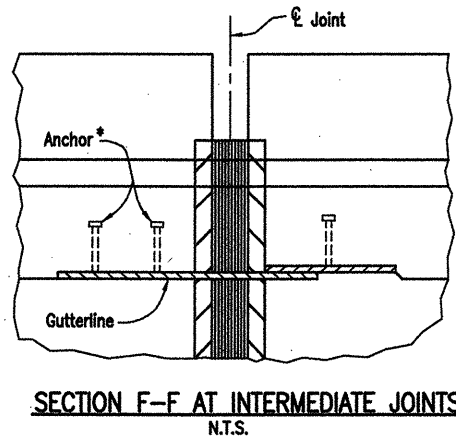
DATE REVISED	DATE FILMED	DATE REVISED	DATE FILMED	FED. ROAD NO.	STATE	FED. AID PROJ. NO.	SHEET NO.	TOTAL SHEETS
					ARK.			
				JOB NO.		110395	107	203
				06830		EXP. JOINT		47097



Bolts, washers and hex nuts shall be considered subsidiary to the item "Prestressed Concrete Girders."

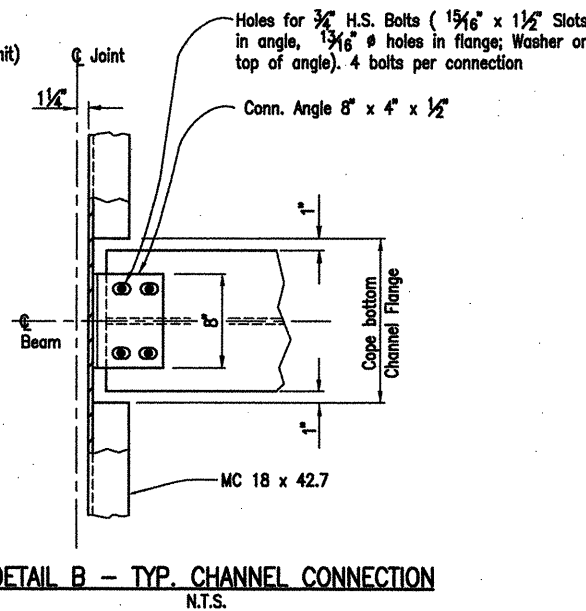


Note: Details of Joint turn-up in curb and parapet are general and show basic design controls only. See SP Job 110395, "Armored Joint with Neoprene Strip Seal."



Note: Each expansion joint device shall be blocked in the Shop by the Fabricator to the dimension shown, and the blocking details shall be shown on the Shop Drawings. The blocking shall not be removed until the Slab on one side is complete. Blocking shall be placed within 2'-0" of each end of the device and with a maximum spacing of 8'-0". Removal shall be just before pouring the second side of the joint, as directed by the Engineer.

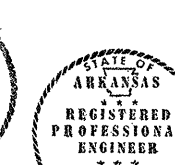
Note: For Locations of Sections A-A, B-B and C-C, See Dwg. Nos. 47095 and 47096  
For Locations of Details A and B, See Dwg. Nos. 47095 and 47096



White River Bridge Bent No.	"A"				"B"				"C"	
	Width Perpendicular to Jt. @ 24 Hr. Avg. Temp. ** of:				Width Perpendicular to Joint at 24 Hr. Avg. Temp.** of:				Width Perpendicular to Joint at 24 Hr. Avg. Temp. of 60° F.	
	"A min. 120° F.	80° F.	60° F.	40° F.	"A max. 0° F.	80° F.	60° F.	40° F.		
1	2 5/16"	2 3/4"	3"	3 1/4"	3 11/16"	2 1/4"	2 1/2"	2 3/4"	6"	
5, 9, 13, 17, 21, 25, 29, 33, 37, 41	1 11/16"	2 9/16"	3"	3 7/16"	4 5/16"	2 1/16"	2 1/2"	2 15/16"	6"	
49, 53, 57, 67 71, 75, 78	1 7/16"	2 1/2"	3"	3 1/2"	4 9/16"	2"	2 1/2"	3"	6"	
45, 61, 64	1 9/16"	2 1/2"	3"	3 1/2"	4 7/16"	2"	2 1/2"	3"	6"	

#### ALTERNATE NO. 1

#### DETAILS OF EXPANSION JOINTS (SHEET 3 OF 5)



WHITE RIVER STR. & APPRS.  
(CLARENDON) (PH III) (F)  
MONROE COUNTY

ROUTE 79 SEC. 13

ARKANSAS STATE HIGHWAY COMMISSION  
LITTLE ROCK, ARK.

Engstrom/Modjeski and Masters, Inc.

DRAWN BY: PMR DATE: Nov. 07 FILENAME: b1103951\_e03

CHECKED BY: GPT DATE: Nov. 01 SCALE: 3/4"=1'-0"

DESIGNED BY: YO DATE: Nov. 01

BRIDGE NO. 06830 DRAWING NO. 47097

BRIDGE ENGINEER